

M O'Brien
Plant Hire .co.uk

FARESIN_
FOR_
FUTURE_



€626
FULL ELECTRIC



1. Coupler / headstock
2. Boom section
3. Fixed boom
4. Lifting cylinder connection
5. Attachment to the frame
6. Front axle
7. Rear axle
8. Frame
9. Cabin



- Battery life up to 6 hours
- Recharge: on board 13 hours / fast 2,5 hours
- Maximum lifting height 6 m
- Lifting capacity 2,6 t
- Transmission motor 15 kW
- Hydraulic services motor 10 kW
- Swinging angle 155°
- Turning radius 3,25 m
- Headstock Type FH Standard

ADVANTAGES

- ✓ Reduced noise
- ✓ 0 emissions
- ✓ 100% electric
- ✓ Compact and manoeuvrable
- ✓ High operator comfort
- ✓ Swing angle: 155 ° - the best in this category



FEATURES

GREEN TECHNOLOGY

Thanks to its electric drive the machine works with zero CO2 emissions.

3 TYPES OF RECHARGING

Use three phase external charging (normal or fast) and reduce the recharge time during the work cycle. Use on-board mono phase charging at night.

OPERATING COSTS -60%

The increased purchase investment is amortised on average after 2 years of work.

The residual battery efficiency is 80% D.o.D. guaranteed after 2000 charging cycles, 4.4 years of use.

CONVENIENT

Simple and convenient maintenance.

SILENT AND EFFECTIVE

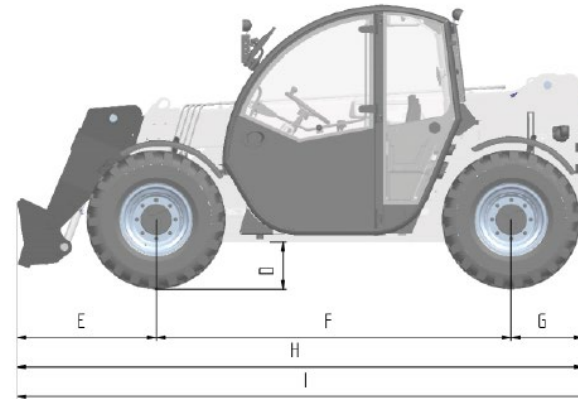
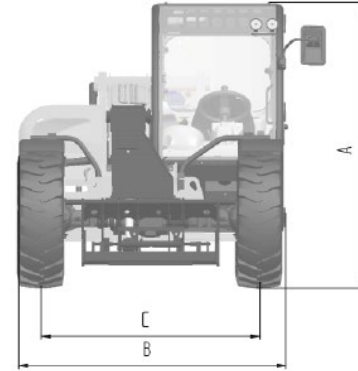
The same performance as a conventional telescopic handler 6.26 without the noise of a combustion motor.



TECHNICAL DATA

A. Height (mm)	1935
B. Width (mm)	1890
C. Roadway (mm)	1550
D. Clearance from ground (mm)	220
E. Front overhang (mm)	990
F. Pitch (mm)	2525
G. Rear overhang (mm)	520
H. Length (mm)	4035

Weight	4800 kg
Lifting capacity	2600 kg
Speed with tires 16,5" (std)	0-13 km/h
Speed with tires 18" (opt)	0-15 km/h
Traction drive	4WD
Steering	4WS
Main Electrical system	80 V
Auxiliary Electrical system	12 V
Flow rate hydraulic services	80 l/min @ 230 bar



PERFORMANCE

Transmission motor - S2 (60')	15 kW	
Hydraulic services motor - S3 (70%)	10 kW	
Emissions	zero emissions	
BATTERY STANDARD		
Lithium battery	80 V	
Rated capacity	300 Ah	
Charging time (standard on board mono phase charger)	0-80%	10 h
	0-100%	13 h
Charging time (external three phase charger)	0-80%	4 h
	0-100%	5 h
Charging time (fast external three phase charger)	0-80%	1,5 h
	0-100%	2,5 h
Running time under normal activities, continuous operations	up to 3 h	
Running time under normal activities, interrupted operations	up to 6 h	
BATTERY OPTIONAL		
Lithium battery	80 V	
Rated capacity	400 Ah	
Charging time (standard on board mono phase charger)	0-80%	13 h
	0-100%	16 h
Charging time (external three phase charger)	0-80%	5 h
	0-100%	6,5 h
Charging time (fast external three phase charger)	0-80%	2 h
	0-100%	3,5 h
Running time under normal activities, continuous operations*	up to 4 h	
Running time under normal activities, interrupted operations*	up to 8 h	
BATTERY CHARGER		
On board battery charge power supply (standard)	120-230 Vac	
External battery charger (optional)	400 Vac	
External battery fast charger (optional)	400 Vac	



FIELDS OF USE

The Faresin electric telescopic handler is suitable for any type of application where the use of a combustion motor would be limited



HISTORICAL CENTRES



BUILDING SHIPBUILDING



READY TO EAT PRODUCT



INDOORS (FAIRS, EVENTS)



LIVESTOCK



ASEPTIC INDUSTRIAL STRUCTURES



LOGISTICS



ORGANIC AGRICULTURE



RENTAL



GREENHOUSES AND NURSERIES



1. The first bigger digits indicate the maximum lifting height
2. The last 2 digits indicate the maximum lifting capacity (example 26 = 2600 Kg)
3. The writing indicates the name of the configuration:
 - **FULL ELECTRIC** (configuration: electric transmission and hydraulic system with gear pump)



5 RANGES
57 CONFIGURATIONS

SECTORS OF USAGE:

- AGRICULTURE
- CONSTRUCTION
- BIOGAS
- MILITARY/OEM
- RENTAL



6m 7m/9m 7m/11m 9m/10m 14m/17m

RANGE CLASSIFICATION

SMALL
FR00

COMPACT
FR01

MIDDLE
FR02

HEAVY DUTY
FR03

BIG
FR04

MODELS

6.26

7.30C / 9.30C

7.30E / 7.35 / 7.45
8.40 / 9.30 / 11.35

9.40 / 9.60 / 9.70 /
10.65

14.42 / 17.40 / 17.45

CONFIGURATIONS

CLASSIC 52
FULL ELECTRIC

CLASSIC 55
CLASSIC 74
HLS 55
HLS 74
VPS 100

CLASSIC 55
CLASSIC 74
HLS 74
VPSe 100

CLASSIC 74
HLS 74
VPSe 100

CLASSIC 55
CLASSIC 74
HLS 74

- Lithium battery 80V (LifePO4)
- Battery pack 300 Ah (std)
- Charging mode* (0-100%):
 - On-board (std) – 80V 25Amp
 - 11Amp@120Vac – 7,5Amp@230Vac
 - Charging time: 13H
 - External three phase charger (opt) – 80V 80Amp
 - 18Amp@400Vac – 15Amp@480Vac
 - Charging time: 5H
 - External three phase fast charger (opt) – 80V 200Amp
 - 43Amp@400Vac – 36Amp@480Vac
 - Charging time: 2,5H

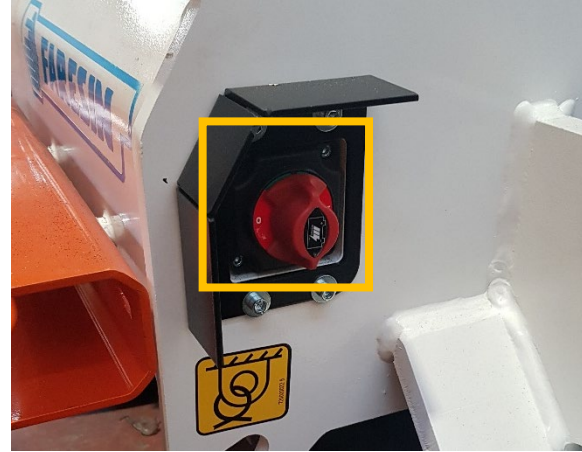
* Charging time calculated at 25°C

ADVANTAGES

- ✓ High working autonomy
- ✓ Possibility of intermediate refills
- ✓ PWM charge request: avoids overcharging the battery



- Auxiliary 12V battery
- Manual battery switch on the front of the machine
- Battery protected from the external environment by a robust housing



ADVANTAGES

- ✓ Protection against discharge
- ✓ Safe placement of the battery where it is easily accessible



1. Transmission electric motor: 15 kW liquid-cooled three-phase asynchronous 80Vdc
2. Hydraulic services electric motor: 10kW air-cooled three-phase asynchronous 80Vdc

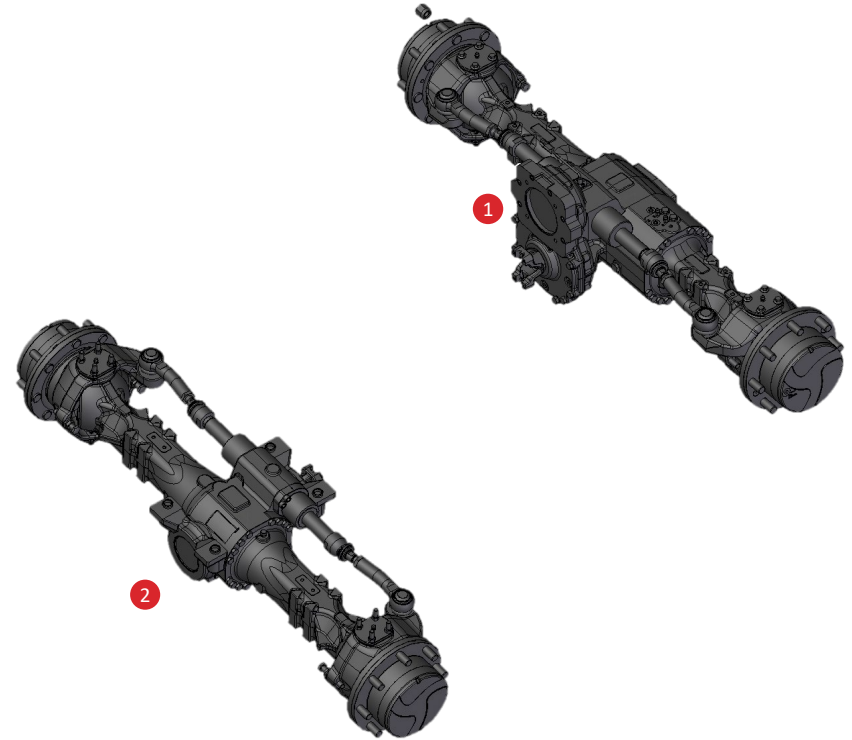


Rigid front axle (1)

- Limited slip type 45% differential as standard
- Internal disk brakes in oil bath for longer life
- SAHR (Spring-Applied, Hydraulic-Release) emergency and parking brakes INTERIOR with negative hydraulic actuation

Oscillating rear axle (2)

- Open type differential



ADVANTAGES

- ✓ Robust axle design for high safety and stability for all activities, even on rough terrain
- ✓ Exceptional maneuverability, thanks to the wide steering angle

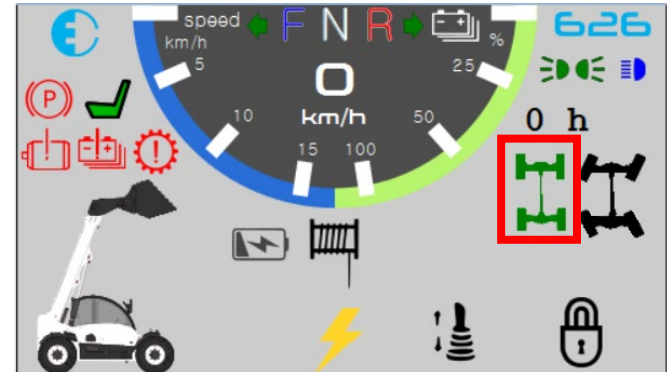
Three steering systems selectable from the dashboard and visible on the display:

- **INTEGRAL** Front and rear wheels steered in opposite directions for a smaller turning radius
- **FRONT**
Front steering wheels and fixed rear wheels in central position for road circulation
- **CRAB**
Front and rear wheels steered with the same angle and direction for lateral movements



ADVANTAGES

- ✓ Great handling of the machine even in the most restricted environments
- ✓ Easy alignment of rear and front axles thanks to the icons on the display



SERVICE BRAKE

- Hydraulic type servo assisted
- Acts on the discs in oil bath on the front and rear axle where provided

PARKING BRAKE

- Located in the front axle
- Composed of springs that lock brake discs in the absence of hydraulic pressure

ADVANTAGES

- ✓ The brakes integrated in the axles guarantee high protection and reliability

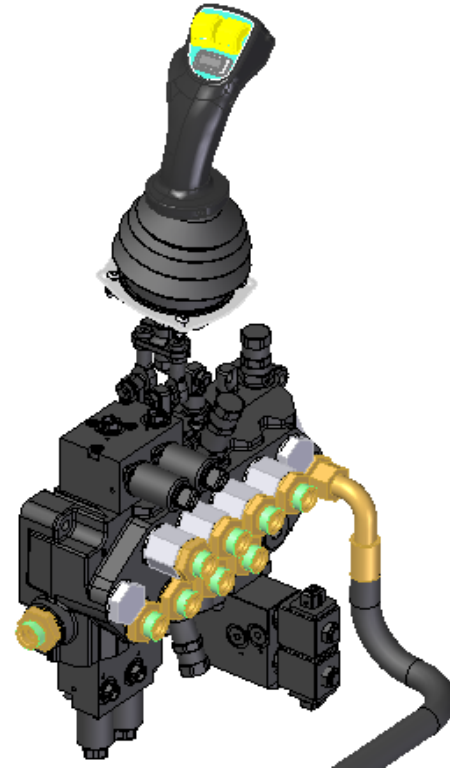


DISTRIBUTOR

- 4 sections with electro-mechanical control
- Mechanical controls: lifting / tilting
- Electro-proportional controls: extension / auxiliary

SERVICE PUMP

- Silenced Gear pump
- Integrated priority valve
- Oil flow rate 80 l/min @ 230 bar



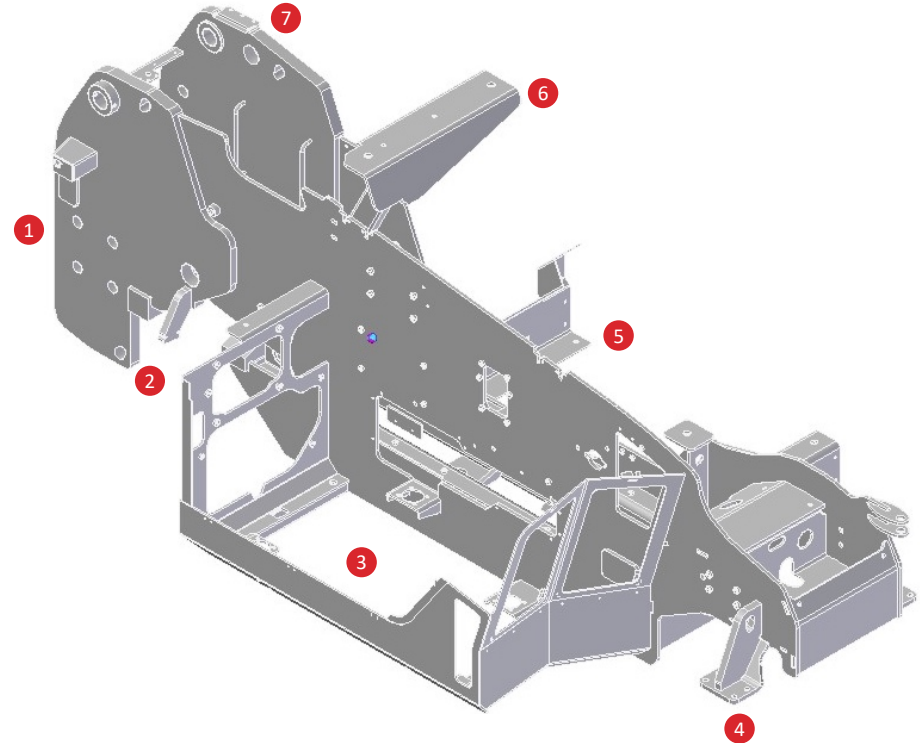
MECHANICAL-ELECTROPROPORAL JOYSTICK:

- High precision movements
- Proportional electro-mechanical system
- Multifunctional
- Lifting and swing movements with mechanical control
- Extension and auxiliary movements with electro-proportional control by rollers
- Integrated FNR command

1. Extension Roller Boom
2. Auxiliary Roller Boom
3. FNR integrated command (Forward, Neutral, Reverse)
4. Ergonomic wrist rest
5. Present man switch



- Built in S355 steel of first fusion and certified in the characteristics of hardness, elasticity and breaking load
- Fully welded by robotic systems
- Low center of gravity for greater stability
- Modular structure to resist twisting
- Cutting of manners with modern Laser and Plasma technologies



1. Counter Weights
2. Rear axle coupling
3. Battery compartment
4. Front axle connection
5. Cab and fuel tank support
6. Cab support
7. Boom pivot support

- 1 extension boom
- Lifting heights 6 mt
- Built in high strength steel S420
- Hinged in the frame in a lowered position for maximum visibility and better weight distribution
- Equipped with reinforcements at the points of bigger stress
- 2 types of coupler attachments
- Double C welding system for greater structural strength

1. Nose
2. Coupler / headstock
3. Boom section
4. Fixed boom
5. Lifting cylinder connection
6. Attachment to the frame



- Swinging angle 155°

ADVANTAGES

- ✓ Wide articulation angle for safe discharge
- ✓ Precise parallel operation even when working at the top

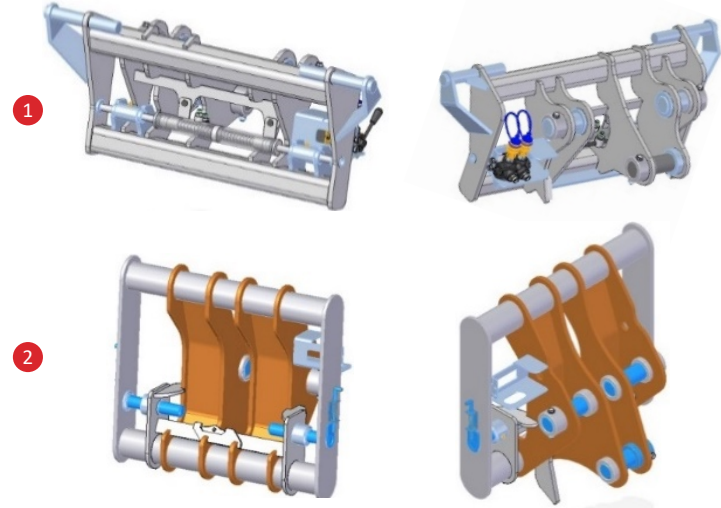


1. EURO TYPE

- Hydraulic quick coupling
- 6 ways manual diverter

2. FH TYPE (FARESIN)

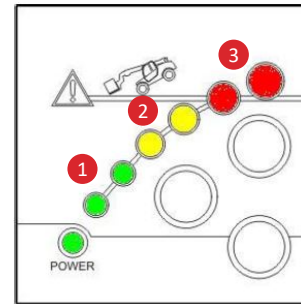
- Manual coupling
- Optional with hydraulic quick coupling and 6 ways manual diverter



ADVANTAGES

- ✓ Easy to use
- ✓ Safe and simple operations
- ✓ Quick attachments changeover times
- ✓ High structural strength

- Consisting of a display, a load cell mounted on the rear axle and a control unit
 - Continuously checks the weight of the load lifted in relation to the length and inclination of the boom
 - The display in the cabin indicates with the colored LEDs the percentage of maximum load reached
 - Greater safety at work
1. Green indicator: regular load
 2. Yellow indicator: pre-alarm, an intermittent acoustic signal is emitted
 3. Red indicator: alarm, a continuous acoustic signal is emitted and all boom movements are blocked
 4. By-pass button to return to safe conditions in alarm situations



ADVANTAGES

- ✓ Greater safety for the operator
- ✓ Easy to use the machine even for less experienced operators

BOOM SUSPENSION

- Absorbs the boom shocks movements during machine transfers
- Greater comfort and safety during transfers with or without a load
- Activated with a button in the panel

ADVANTAGES

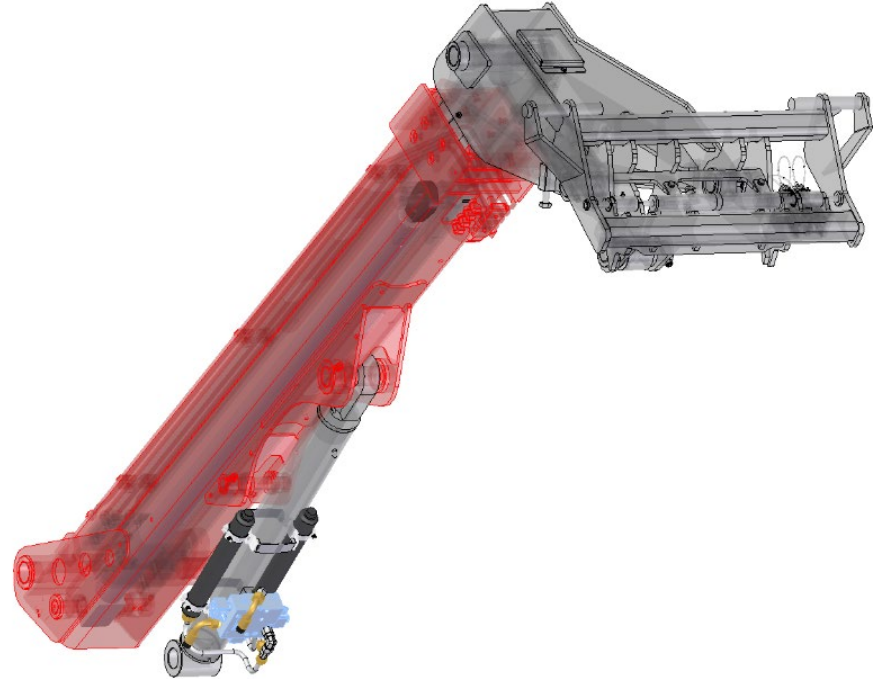
- ✓ Greater comfort and safety when traveling with load

FLOATING BOOM

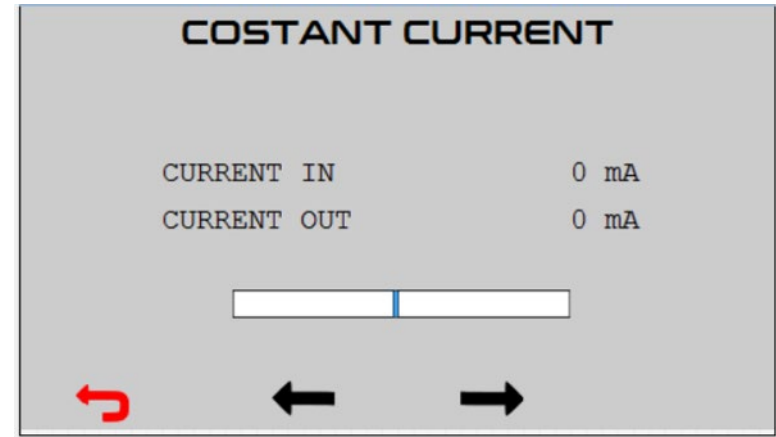
- The function of floating boom is necessary when using accessories that must follow the level of the ground
- It allows the boom to move free up and down
- For safety it can only be activated if the boom is at a limited height from the ground

ADVANTAGES

- ✓ Machine multifunctionality



- It is possible to have, as an option, the function of oil constant flow for hydraulic services at the head of the boom
- The function, is ideal for the correct functioning of accessories that require a constant and predetermined oil flow such as snow turbines, sweepers, etc.



ADVANTAGES

- ✓ Multifunctionality
- ✓ Machine optimization with special accessories

- **VISUAL AT 360°**
Antireflection window and extended windscreen to increase the operator's field of view and reduce blind spots
- **COMFORT**
Ergonomic seat with adjustable armrests and steering wheel for maximum working efficiency
- **ERGONOMIC**
Integrated wrist rest to relieve tension of the muscle arm allowing full control of the main functions of the machine
- **DASHBOARD**
Equipped with intuitive multifunctional color LCD display
- **STANDARD OUTFIT**
Document pockets, bottle holder, flashing light
- **MAIN OPTIONAL**
Safety grille, high brightness front and rear LED work lights, upper wiper, air suspension seat
- ROPS - FOPS certified
- ANSI B56,6 certified



- 2 seats available
- Standard mechanical suspension seat
- Optional Grammer seat with pneumatic suspension

ADVANTAGES

- ✓ Operator comfort
- ✓ Seat adjustments



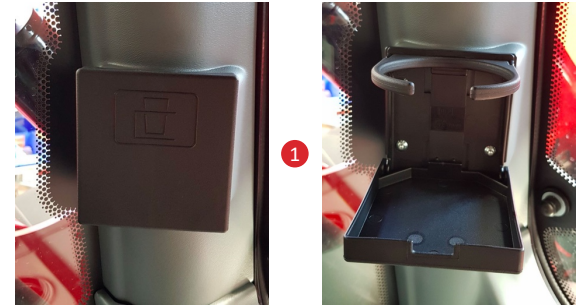
- Standard tiltable steering column
- Tilttable by lever located next to it



ADVANTAGES

- ✓ Easy operator adjustment

1. Drinks holder
2. 12 V socket for electronic devices (mobile phone, etc.)
3. Document pocket in the door
4. Document pocket behind the seat
5. Sun curtain



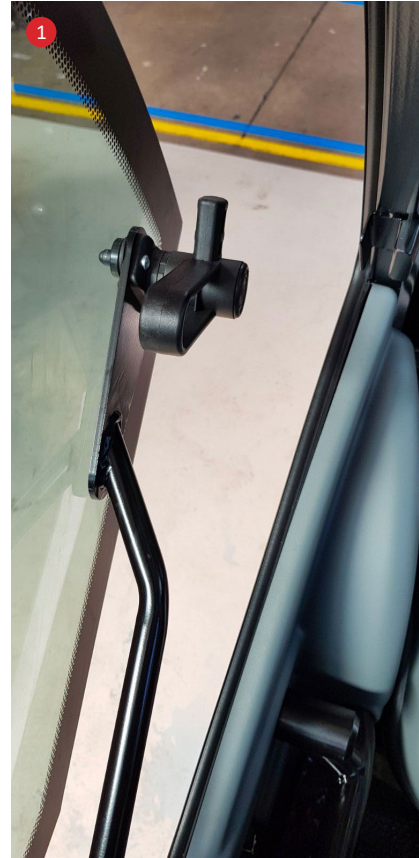
ADVANTAGES

- ✓ Large and small spaces for food, drinks, documents etc.
- ✓ Power supply for electronic devices

1. Openable glass door with safety lock
2. Adjustable rear glass

ADVANTAGES

- ✓ Fresh air whenever you want
- ✓ Greater visibility in difficult driving conditions
- ✓ Unlocking the window from the inside



- Intuitive multi-function color LCD display
- Immediate display of all parameters
- Information on machine and diagnostic functions

1. Machine errors
2. Electric motors information
3. Battery information
4. Menù



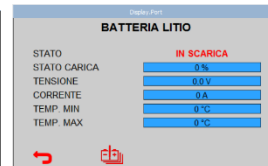
ADVANTAGES

- ✓ All machine functions easy to consult
- ✓ Integrated diagnostics

MAIN PAGE



BATTERY STATUS



DIAGNOSTICS

ERRORI MACCHINA		
MEMORIA	#	hh
E01 Tens. Batteria	0	0
E02 Stato NV	0	0
E03 Sensore Potenza	0	0
E04 Display & ECU TC	0	0
E05 Tast. & ECU TO	0	0
E06 ACE4 & ECU TO	0	0

ATTIVI	
0/29	
Nessun errore	

MOTORS PARAMETERS

MOTORI ELETTRICI	
TRAZIONE	SERVIZI
Velocità Attuale	Velocità Attuale
0 rpm	0 rpm
Corrente Istantanea	Corrente Istantanea
0 A	0 A
Temperatura	Temperatura
0 °C	0 °C
Temperatura ACE4	Temperatura ACE2
0 °C	0 °C

ERRORI BATTERIA		
MEMORIA	#	hh
E01 Tensione Elevata	0	0
E02 Tensione Basso	0	0
E03 Tensione EoL	0	0
E04 Lettura Tens.	0	0
E05 Temp. Elevata	0	0
E06 Temp. Basso	0	0

ATTIVI	
0/28	
Nessun errore	

- Front and rear street lamps with main-beam and dipped-beam and with direction indicator
- Indicator of reverse gear
- Flashing
- LED work lights on cabin and / or arm for excellent 360 ° lighting for long days of work
- Uniform light distribution to prevent fatigue
- The LED work lights can be rotated and adjusted individually
- Simple operation with switches

ADVANTAGES

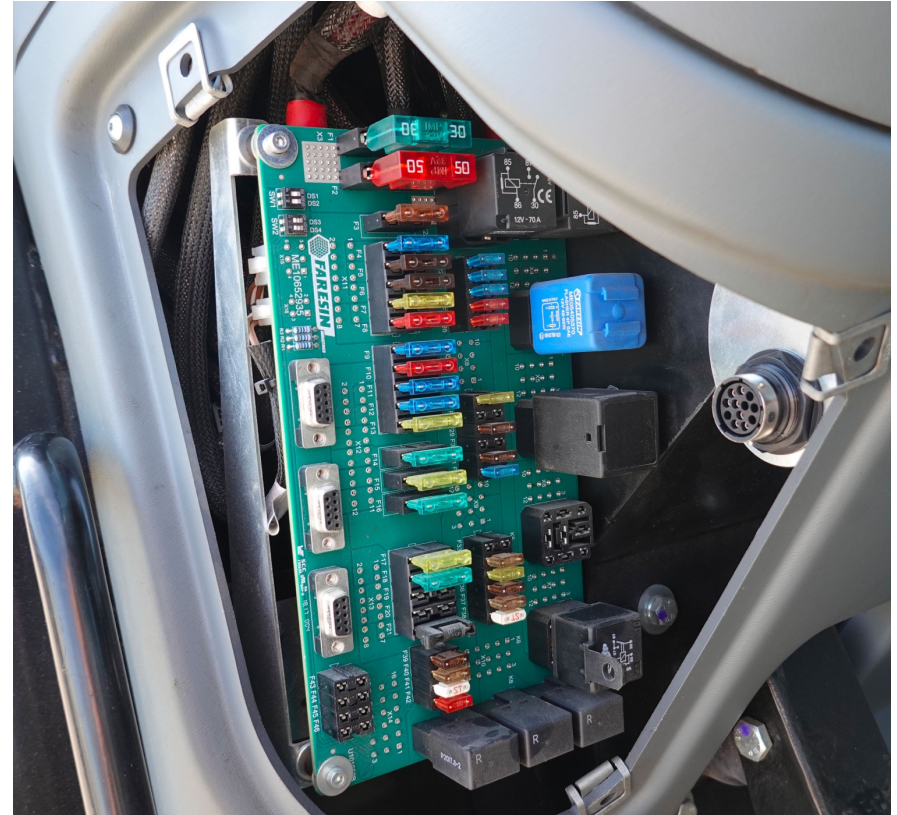
- ✓ Very high LED light emission with low energy consumption
- ✓ Long duration



- The fuses are located inside the cabin for protection against dust and water
- Removable panels
- No access tools are needed

ADVANTAGES

- ✓ The fuses reside in a safe place
- ✓ Easily accessible



- Faresin offers the highest quality of service worldwide
- The Faresin team provides professional and reliable support
- Quick troubleshooting, configuration and updating thanks to the latest diagnostic systems

ADVANTAGES

- ✓ Reliable service 365 days a year

- The electrical system of each machine is tested on the production line before being assembled on the machine
- It allows the elimination of small defects before the PDI checks, reducing the processing time and the number of warranty claims

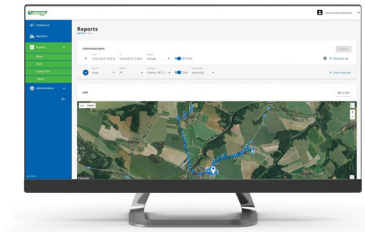
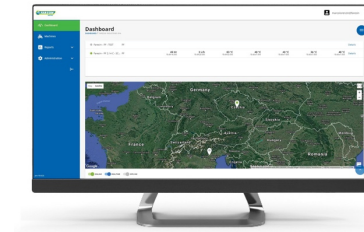
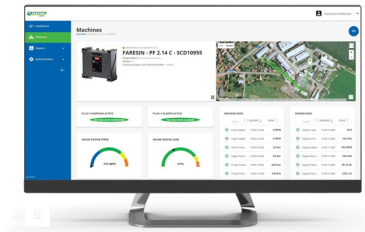
AUTOMATIC SYSTEMS FOR THE PRODUCTION OF ELECTRICAL SYSTEMS

The internalisation of this production phase has allowed:

- Don't rely on suppliers, speeding up delivery times and product development
- Traceability of each component
- Significant reduction of micro defects, with great impact on the number of warranty claims

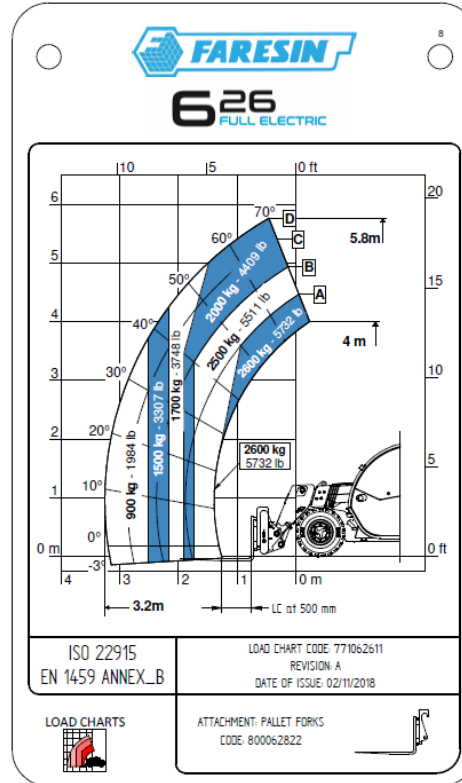


- Farmatics is the complete solution of Hardware, SIM, Software Application and Server Data Management
- Allows you to remotely control the operation of the machines
- The service is structured in two levels of access:
 - ❑ On the first level it allows the customer, thanks to a GPS system, to geolocalize the position of the unit
 - view the health status
 - control the energy consumption and productivity of their vehicles
 - ❑ At the second level a whole series of functions can be parameterized, by contacting the Faresin Technical Office.
 - CAN-BUS data and alarm signals from the machine
 - Main parameters in real time of the machine
 - Machine hours
 - Diagnostic data for faults (FMEA)



ADVANTAGES

- ✓ Improved machine management and control
- ✓ Assistance service for management, maintenance and warranty
- ✓ Extension warranty service



ZERO EMISSIONS AND REDUCED NOISE

The fact that it has zero CO2 emissions allows for it to be used even in closed environments, such as warehouses, logistics areas and agricultural activities, improving the level of comfort and safety in the workplace.

The low noise level allows for it to be used in workplaces and environments where the use of combustion motors is not recommended.

These technical solutions are perfectly in line with new green technology which provides for a reduced impact on the environment in the future.

The telescopic handler Full Electric 6.26 can be used in any operating condition thanks to its versatility and its all-wheel drive.

**GREEN
TECHNOLOGY:
LESS IS MORE**





THANK YOU FOR YOUR ATTENTION!